



POWERTRACK

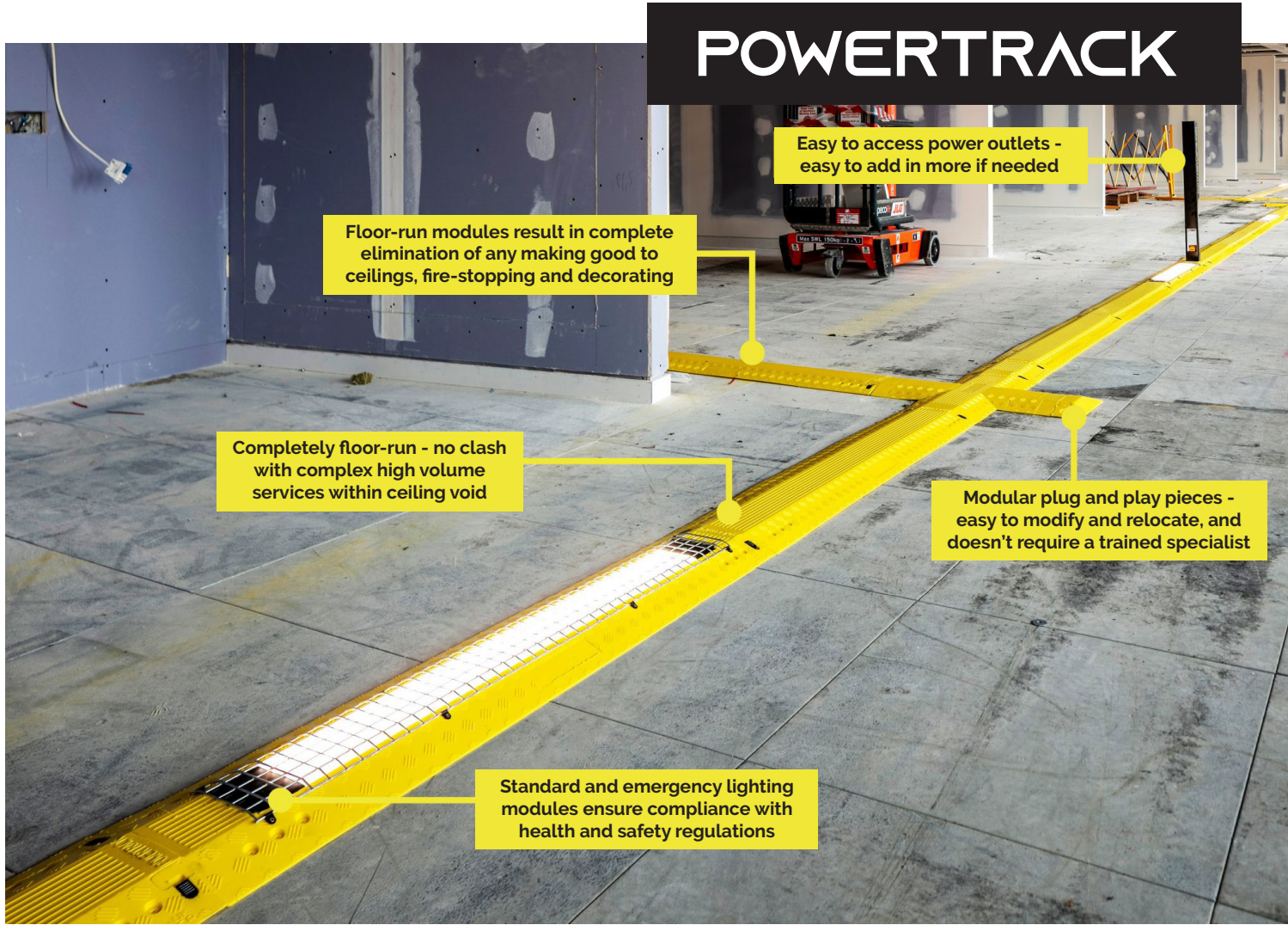
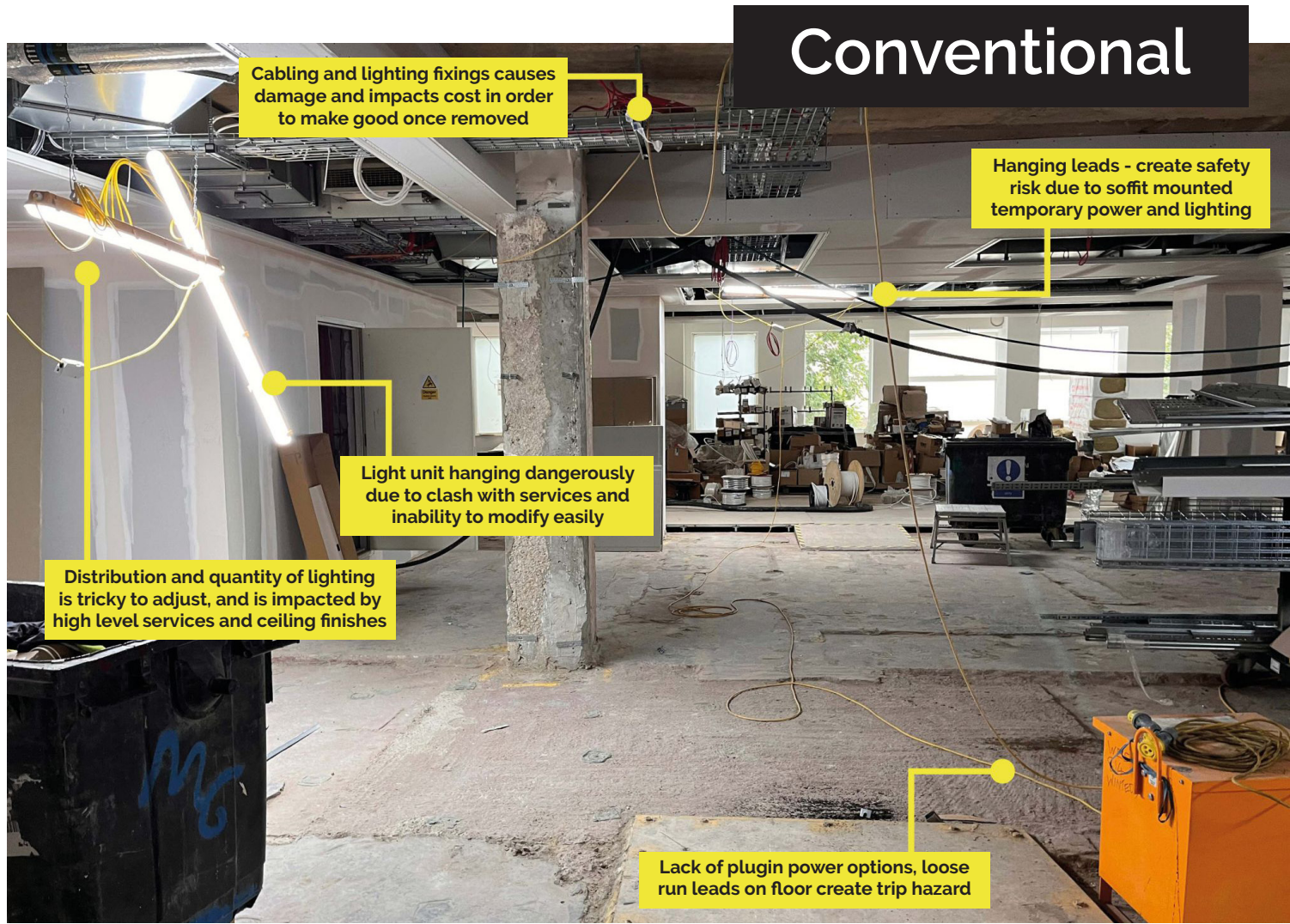
PRODUCT DOCUMENT 2026

A low-level, reusable temporary lighting and power system.

Invest. Re-use. Repeat

POWERTRACK

A low level reusable temporary lighting and power system which requires no working at height, reduces trailing leads, creates zero waste and can be installed and modified by any competently trained person.



OUR MODULES



Circular Economy Product

CORE COLLECTION



Starter



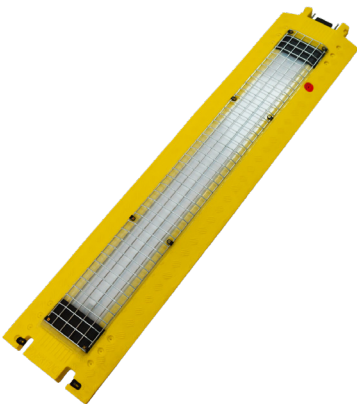
Long Runner



Medium Runner



Short Runner



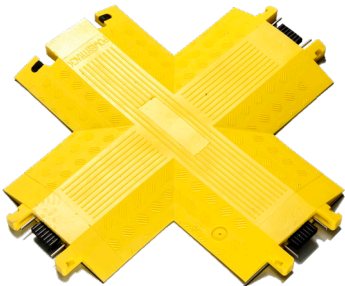
Lighting



Emergency Lighting



Power, Post and Globe



4-Way / Cross



Slinky

OUR MODULES

POWERTRACK ACCESSORIES



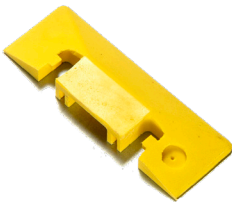
Lighting and Power Globe



1800mm Running Man



1800mm Twin Floodlights



End Cap



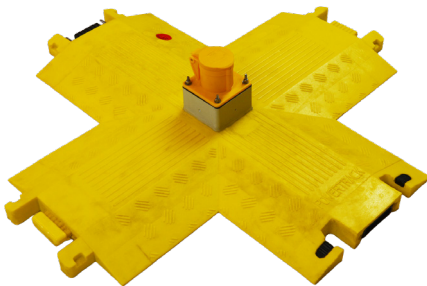
Test Leads



Slinky Lead



Flat Cable Slinky



Power 4-Way / Cross



Circular Economy Product

LET'S LOOK A LITTLE CLOSER...

Up to 5-tonne point load rating
(excluding Standard and EMG
lighting modules)

Unique ID tagging on every
module, customisable
to individual customer
requirements.

Integrated emergency neon indicator
and isolator on all EMG lighting
modules. EMG lighting available
with 1-hour or 3-hour battery backup
options

Protective mesh fitted as standard
to all Standard and EMG lighting
modules

IP67/IP2X rated connections – dust-
tight and protected against low-
pressure water ingress

Safety treads and bold colour
for high visibility

Simple push-in, lock-in connection

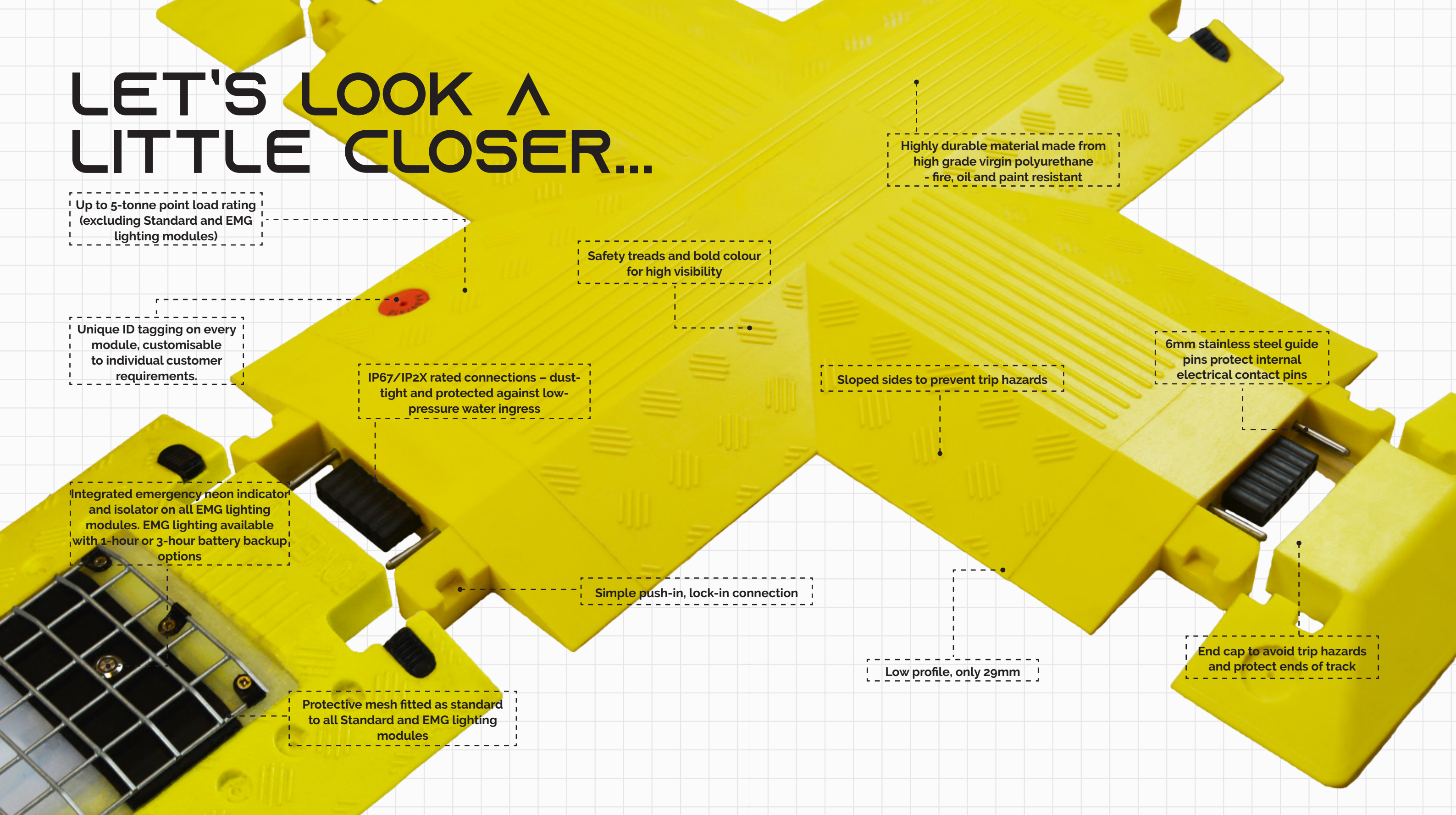
Highly durable material made from
high grade virgin polyurethane
- fire, oil and paint resistant

Sloped sides to prevent trip hazards

Low profile, only 29mm

6mm stainless steel guide
pins protect internal
electrical contact pins

End cap to avoid trip hazards
and protect ends of track

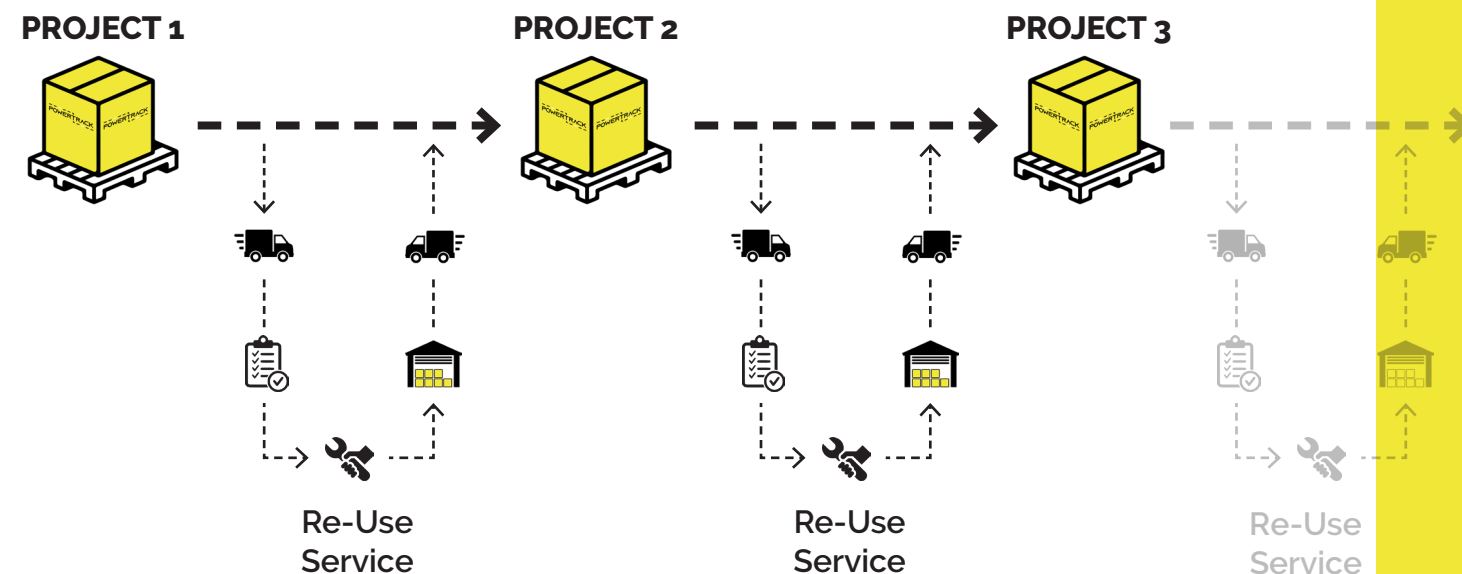


RE-USE SERVICE

Our **Re-Use Service** enables customers to **retain ownership of their site temporary power equipment**, which we **collect, store, repair, and manage** between projects.

At the end of each project, simply notify us and we will arrange **collection and secure storage** of your Powertrack modules. Ahead of your next installation, our team produces a **tailored design** that **makes full use of your existing Powertrack stock**, helping you **maximise savings and reduce waste**.

In addition, we provide **full stock management**, including **inventory tracking, condition reporting, and proactive maintenance**. This ensures your equipment is **always ready for deployment**, fully serviced, and optimised for future project requirements.



SAVING OF 62%

**Powertrack Modules Purchased in 2021—
Now Used on Their 12th Project:**



Re-Use Service Cost: £5 per module

Based on 2,000 sqm projects (20,000 sqft)

SPEND OVER 5 PROJECTS

CONVENTIONAL

Project No.

- 1 £6,400 plus 30% uplift* = £8,300
- 2 £6,400 plus 30% uplift* = £8,300
- 3 £6,400 plus 30% uplift* = £8,300
- 4 £6,400 plus 30% uplift* = £8,300
- 5 £6,400 plus 30% uplift* = £8,300

Total Costs = £41,600

*due to variations

POWERTRACK

Project No.

- 1 Lease with option to buy = £6,400
- 2 Buy leased modules = £6,400
- 3 Re-use service = £1,000
- 4 Re-use service = £1,000
- 5 Re-use service = £1,000

Total Costs = £15,800

POWERTRACK COSTS

Split the cost of owning your Powertrack with our lease to purchase option. Lease Powertrack on your first project and own it by your 2nd project with your 3rd, 4th, 5th 6th and 7th Project costing less than £500.00 for our reuse service.

No variations, no call out costs, no down time just savings.

CUMULATIVE SPEND OVER 5 PROJECTS

CONVENTIONAL

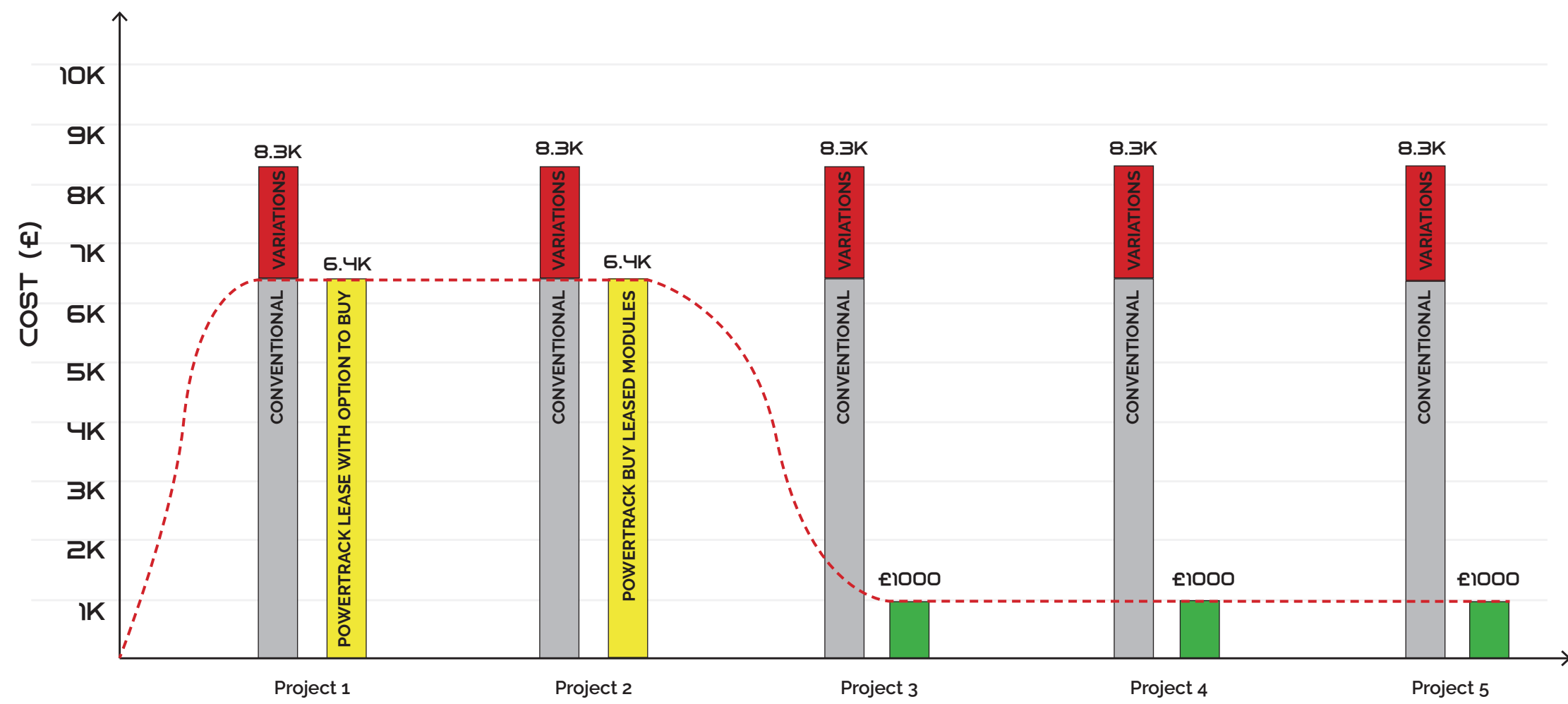
£32,000 + variations at 30% = **£41,600**

POWERTRACK

£12,800 + £1000 per service = **£15,800**

= SAVING OF 62%

Conventional System vs. POWERTRACK
Based on 2,000 sqm projects (20,000 sqft)



POWERTRACK DESIGN SERVICE

Need Help Choosing the Right Powertrack Modules?

Our **complimentary design and cost planning service** makes it easy. Just send us your **floor plans** (PDF with dimensions or a scale bar), and our in-house team will create a **bespoke layout** tailored to your site's needs — including module counts, circuit runs, and distribution points.

You'll receive a **full proposal** with a cost breakdown, equipment list, and estimated installation time. We prioritise safe, efficient layouts with minimal high-level fixings and built-in flexibility for future reconfiguration.

We're happy to attend site for a survey, review the design with your team, and demonstrate Powertrack **in person**.

Send your plans to powertrack@ten47.com — we'll return your proposal within 48 hours.



TECHNICAL DATA

Module/Accessory	Description	Length	Width	Height	Weight	IP Rating	Single Point Load	Lumen	Ampage	Voltage	Internal Cable Core Size	<div><div>WARRANTY</div><div>WARRANTY</div></div>
Starter Without switch (PTFC00) With switch (PTFCS0)	Connects to a transformer and is the first module in any Powertrack Circuit.	200mm (not including leads)	285mm	29mm	1.9kg / 2.2kg	IP67 / IP2X	100kg	N/A	16Amp	110v/240v	4mm Power / 2.5mm Lighting	3 Years
Long Runner (PTE120)	Longest connecting module.	1200mm	258mm	29mm	5.7kg	IP67 / IP2X	5000kg	n/a	16amp	110v/240v	4mm power / 2.5mm lighting	3 years
Medium Runner (PTE060)	Mid length connecting module.	600mm	258mm	29mm	3.4kg	IP67 / IP2X	5000kg	n/a	16amp	110v/240v	4mm power / 2.5mm lighting	3 years
Short Runner (PTE020)	Shortest connecting module.	200mm	258mm	29mm	1kg	IP67 / IP2X	5000kg	n/a	16amp	110v/240v	4mm power / 2.5mm lighting	3 years
Lighting (PTLSWC)	Provides both safety and task lighting 30,00 hours LED life span.	1200mm	258mm	29mm	5.9kg	IP67 / IP2X	300kg	2000	16amp	110v/240v	4mm power / 2.5mm lighting	2 years
Emergency Lighting (PTLEWC)	Emergency enabled luminaire. 30,000 hours LED life span. Emergency back up 1 hour. Battery test and off switch to prevent battery drain down.	1200mm	258mm	29mm	6.2kg	IP67 / IP2X	300kg	2000	16amp	110v/240v	4mm power / 2.5mm lighting	2 years
Power (PTP000)	Power module providing 16amp female commando outlet.	200mm	258mm	29mm	1.6kg	IP67 / IP2X	n/a	n/a	16amp	110v/240v	4mm power / 2.5mm lighting	3 years
900mm Power Post (PTPP10)	900mm Power Post, slides over top of Power module to avoid creating trip hazard and connects to Lighting Globes	86mm	86mm	900mm	0.75kg	N/A	N/A	N/A	N/A	N/A	N/A	3 years
1800mm Power Post (PTPP18)	1800mm Power Post Slide over the top of our Cross Piece with Power Outlets and connects to our Powertrack Flood Lights and Running Men.	86mm	86mm	1800mm	2kg	N/A	N/A	N/A	N/A	N/A	N/A	3 years
Standard Cross Peice (PTX000)	Facilitates connections for 4-way direction.	600mm	600mm	29mm	6.7kg	IP67/IP2X	5000kg	N/A	16Amp	110v/240v	4mm power / 2.5mm lighting	3 years
Cross Piece with Power Outlet (PTPX00)	Provides added stability for the 1800mm post used with Powertrack Flood Lights or Running Man units. Note: the cross piece with power outlet does not support 4-way power direction.	600mm	600mm	29mm	7kg	IP67/IP2X	5000kg	N/A	16Amp	110v/240v	4mm power / 2.5mm lighting	3 years
Standard Slinky (PTSNV0)	Enables level changes and directional flexibility, supplied with protective polyurethane-braided cabling.	1000mm	258mm	29mm	4.4kg	IP67/IP2X	100kg	N/A	16Amp	110v/240v	4mm power / 2.5mm lighting	3 years
Slinky Lead (PTSL00)	Designed to provide flexibility and change of direction for the sharpest of angles.	200mm	10mm	10mm	0.1kg	IP67/IP2X	100kg	N/A	16Amp	110v/240v	4mm power + 2.5mm lighting	1 year
Flat Cable Slinky 1.5 Meters (PTSFC1H)	1.5 m Flat Cable Slinky for routing power between Powertrack modules beneath raised access floors, providing smooth pedestrian and goods access, and suitable for use under fire doors.	1500mm	50mm	4mm	0.2kg	IP67/IP2X	100kg	N/A	16Amp	110v/240v	4mm power + 2.5mm lighting	1 year
Flat Cable Slinky 2.5 Meters (PTSFC2H)	2.5 m Flat Cable Slinky for use between low-profile cable guards, providing smooth transport routes where modules cannot be fixed to the floor.	2000mm	50mm	4mm	0.2kg	IP67/IP2X	100kg	N/A	16Amp	110v/240v	4mm power + 2.5mm lighting	1 year
Lighting Globe - Emergency version also available (PTGLSP0)	Fits the 900mm Power Post to deliver 360° light distribution and includes a 16 A outlet for power tools.	900mm	190mm	252mm	1.8kg	IP54	n/a	2600	16Amp	110v	N/A	2 years
Powertrack Twin Flood Light (PTFLD0)	Twin Flood Light for 1800mm Power Post, delivering wider light coverage for higher ceiling applications.	1800mm	400mm	300mm	1.5kg	IP65	NA	3000	NA	110v	N/A	2 years
Powertrack Running Men (TBC)	Our Powertrack Running Men Emergency Lights are designed to connect to 1800mm Power posts and provide emergency exit signage	1800mm	400mm	300mm	1.5kg	IP65	NA	3001	NA	110v	N/A	3 years
Test Leads (PTTL02)	Enables electrical testing of modules.	600mm	N/A	N/A	0.4kg	N/A	N/A	N/A	N/A	N/A	1.5mm power + lighting	1 year
Lighting and Power Test Leads (STNTLP)	Enables electrical testing of modules.	400mm	N/A	N/A	0.4kg	N/A	N/A	N/A	N/A	N/A	1.5mm power + lighting	1 year
End Cap (PTEC00)	Protects exposed ends of modules where needed.	150mm	258mm	29mm	0.75kg	IP65/IP2X	500kg	N/A	N/A	N/A	N/A	3 years

USING POWERTRACK

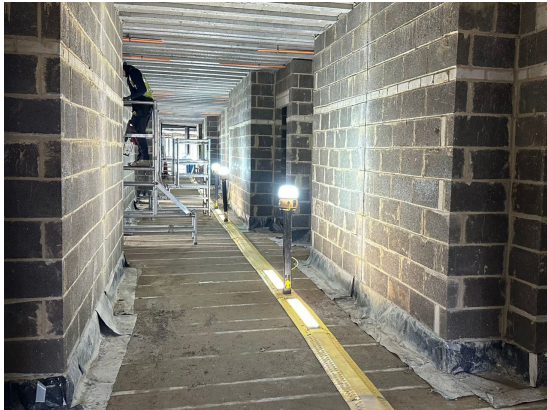


Powertrack is deployed across an ever-growing variety of project types, including:

Rail and Aviation



Strip-out & Fit-out Works



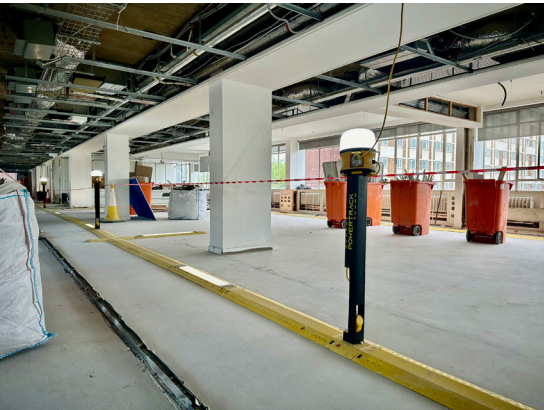
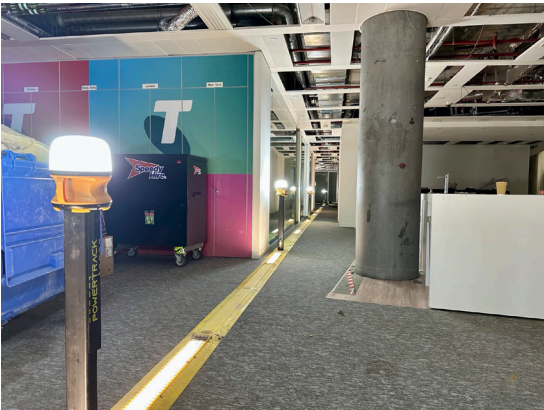
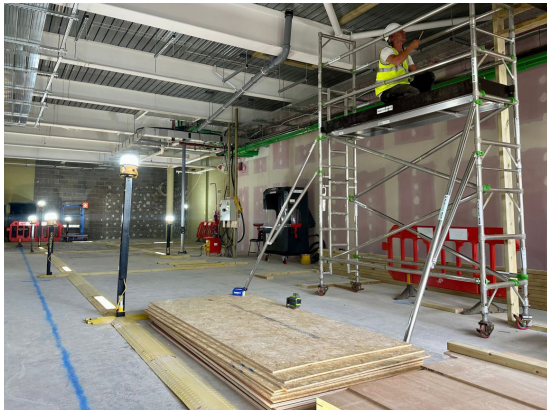
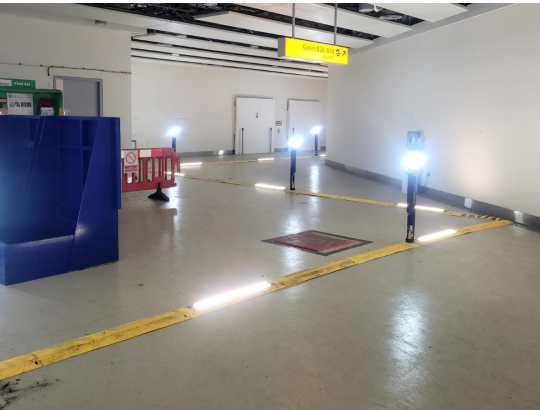
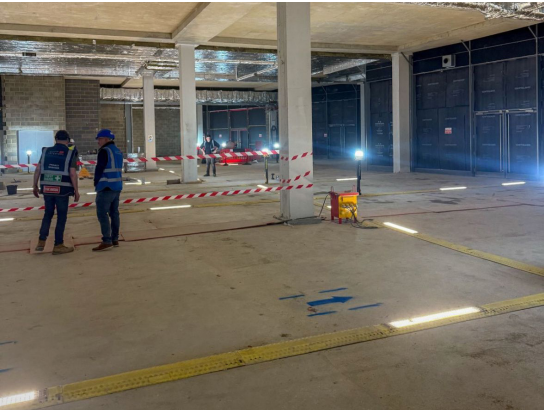
Warehouses & Walkways



Prefabricated Schools



Shell & Core Developments

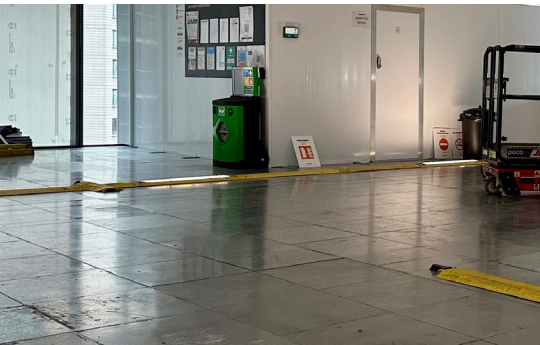


EVOLVING POWERTRACK



At Ten 47, we continually adapt to our customers’ evolving needs. In response to direct customer feedback over the past 12 months, Powertrack has launched 4 new modules, as well as a direct collaboration between Powertrack and CableGuard.

Flat Slinky



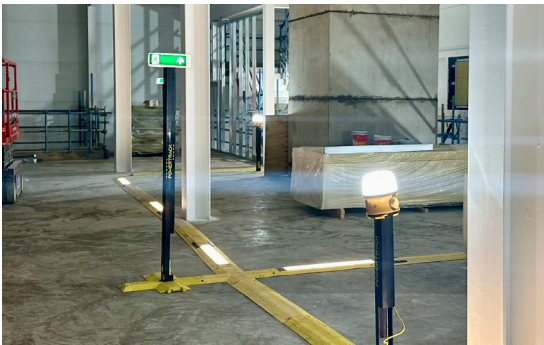
The **Flat Slinky** offers a sleek, low-profile Powertrack connection **ideal for raised access flooring projects**. Its slim design even **fits under doorways**, giving you maximum flexibility on site.

Slinky Lead



Our **Slinky Lead** delivers tighter turns, greater **configuration flexibility**, and a **slimmer profile** than previous designs, all in a robust, easy-to-handle solution.

Running Man



The **Running Man** module provides clear visual guidance for **emergency exits** on site. **Equipped with an emergency battery**, it stays illuminated for up to **an hour without power**.

Twin Floodlights



Our new **Twin Floodlight** delivers a powerful lighting upgrade over standard Globe modules. **Perfect for larger, open areas** that need extra illumination. Each unit **features adjustable angles** for maximum coverage.

CableGuard Collaboration



We've partnered with **CableGuard** to add **Black Line 1 Mobility Access Ramps** to our range, delivering a **DDA-compliant solution** with a gentler slope for equipment to cross Powertrack runs safely and efficiently.

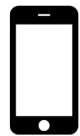
CONTACT



pwrtrack.com



powertrack@ten47.com



+44 (0)1592 321 111



search for  powertrack



by  Ten47

BRITISH PATENT NO. 1900563.6

BRITISH PATENT NO. 2013415.1

AUSTRALIAN PATENT NO. 2020210096

US PATENT NO. US1134926B2

INTERNATIONAL (PCT) PATENT NO. PCT/GB2020/050076

POWERTRACK

**YOU OWN IT
AND RE-USE IT.**

**WE COLLECT, SERVICE
AND MANAGE IT.**

POWERTRACK | INVEST. RE-USE. REPEAT.

