

CASE STUDY

Powertrack - SCS WestRail

HS2

SKANSKA

COSTAIN

STRABAG

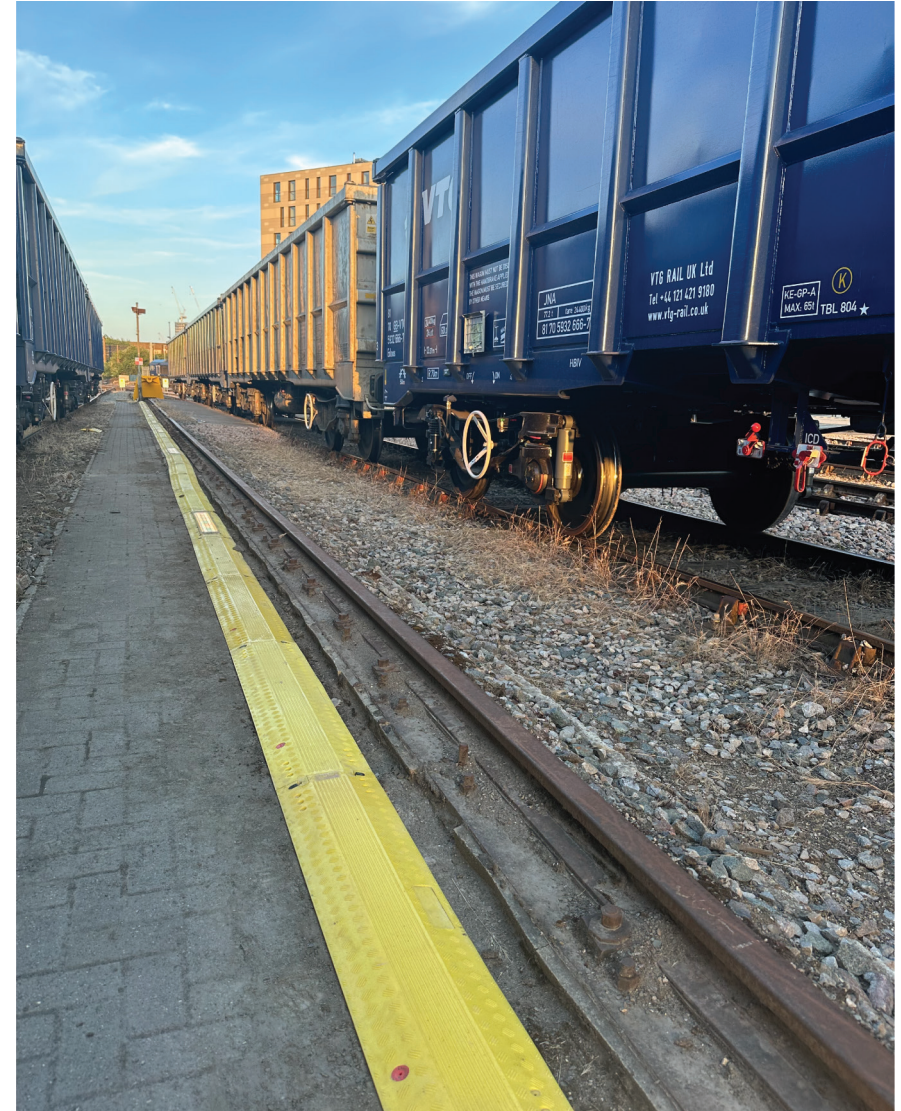
POWERTRACK

PROJECT DETAILS

Powertrack is a low-level modular system designed to increase the safety, sustainability, efficiency, and cost-effectiveness of tunnel and trackside lighting and power.

Since its launch in 2021, Powertrack has been used on various projects and in different environments, including construction sites, new builds, and even nuclear power stations. In late 2022, the Powertrack team initiated discussions with the SCS Railway team to explore the potential benefits of integrating Powertrack into their track and tunnel lighting and power systems.

Following meetings and workshops, we were able to conduct a trial of Powertrack with SCS. The trial was highly successful, and it became evident to all parties involved that Powertrack could provide significant benefits to SCS West Rail.



BENEFITS AND EFFICIENCIES

Time Saving

Traditionally, for lighting along railway tracks, a trench would be dug, cables pulled, and then buried (remaining in the ground), which would be connected to lights mounted on metal frames. This process is both costly and time-consuming.

The benefits that Powertrack offers, compared to the conventional method of installing trackside lighting, are substantial. Our product can simply be laid down next to the railway lines, eliminating the need to excavate trenches, pull and bury cables, and mount light fittings onto frames. This removal of an extremely labor-intensive, time-consuming, and expensive process is a significant advantage.

Powertrack can be installed by any competently trained person. Customers are able to install 100 meters of Powertrack in just 30 minutes, with no requirement for excavation or working at heights, along with a huge reduction in trailing leads and manual handling.



BENEFITS AND EFFICIENCIES

Re-use Service

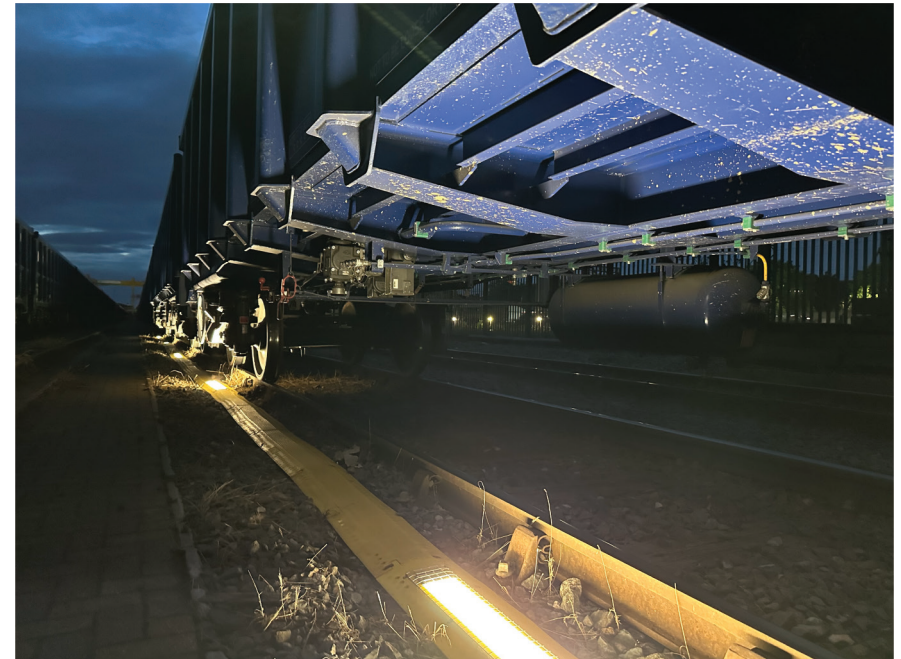
Another great benefit of Powertrack is that it's a product designed to be used from project to project. As a company, we offer a re-use service where, at the end of projects, we collect, clean, store, repair, and manage customers' stock for them. This ensures that their Powertrack system can be used repeatedly, creating zero waste. Our modules come with a 10-year life expectancy, which we anticipate will be exceeded. Powertrack can be installed and modified by any competent person, reducing the need for callouts and CO2 emissions. Additionally, our product requires zero single-use plastic tie wraps.

EPD Certification

Powertrack is EPD certified and significantly reduces the need for working at heights, trailing leads, dust generation, and manual handling.

Cost Effective

Regarding trackside lighting and power, Powertrack has proven to be much more cost-effective to purchase and install than conventional methods. Our product has not only diminished the need for working at heights, trailing leads, and man-hours but has also contributed to waste reduction and carbon neutrality in these operations.



HS2 WEST RAIL POWERTRACK SAFETY AND SUSTAINABILITY BENEFITS

4272 KG

OF CO₂ SAVED

768 KG

OF WASTE SAVED

640 SQM

**PLASTIC WRAPPING
REDUCTION**

2360 HOURS

**OF WORKING AT
HEIGHT AVOIDED**

1670

**SINGLE-USE PLASTIC
WRAPS REDUCTION**

566

MAN DAYS SAVED